



*Tarrega Classic Guitars*



FT-110

FT-111

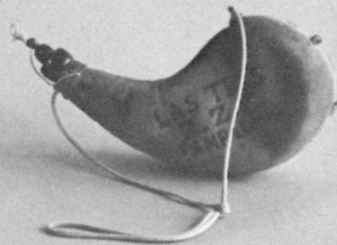
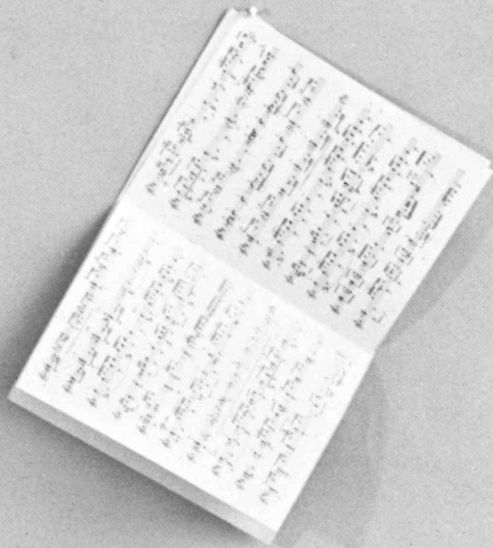
**FT-110 CONCERT SIZE** This Concert Size Classic with fan-braced top of selected straight-grained spruce, back and sides of beautifully figured mahogany is ideal for the musician who desires fine performance and instrument quality. The 24 $\frac{7}{8}$ " scale neck features a rosewood fingerboard and headpiece with five white position markers on the side. Binding and purfling is carefully applied with the top edge in heavy white celluloid and inlaid with two lines of black. The soundhole is beautifully decorated with a  $\frac{1}{4}$ " pattern of brown and tan. Geared patent head strips of polished nickel and the instrument's high gloss make the FT-110 extremely attractive.

**FT-111 CONCERT SIZE** Embodies the same features as the FT-110 except that the body is of highly polished, beautifully patterned blond maple. Fine tone and Swedish craftsmanship mark this instrument as one of the finest available in its price class; an extremely outstanding instrument for the beginning classic guitarist.

**FT-112 GRAND CONCERT SIZE** Truly one of the finest Grand Concert Size Classic Guitars both in tone and craftsmanship in its price range. The Grand Concert has a highly polished figured mahogany body, length-18 $\frac{3}{4}$ ", and a fan-braced top of pure grain white spruce. The



FT-115



FT-112

neck is also of mahogany with a rosewood fingerboard and headpiece. Five white position markers are visible on the upper side. The top and bottom edges are bound with heavy white and black celluloid. The soundhole features a  $\frac{1}{4}$ " inlay pattern of brown, black and tan. Geared patent head strips are of polished nickel. The FT-112 is recommended to those who desire excellent tone and craftsmanship in a full-size grand concert instrument at a moderate price.

FT-115 GRAND CONCERT SIZE Performance and craftsmanship of the highest order characterize this Grand Concert Size Classic, an instru-

ment desired by those maintaining professional standards. The FT-115 has a fan-braced selected straight-grained white spruce top with sides and back of matched mahogany. The neck and headpiece are also of mahogany with an ebony fingerboard containing the partial 19th fret. It has a  $25\frac{5}{8}$ " scale. The top edge is bound and inlaid with five lines of brown, black and tan. The soundhole is patterned with a one-inch circle of inlay in various shades of brown and black. Engraved patent head strips are of polished nickel with pearl buttons and heavy white string posts. The FT-115 is recommended to those demanding full resonant tones in conjunction with an instrument of exceptional beauty.



**SPAIN**

**FT-116 GRAND CONCERT SIZE** An exceptional instrument designed for the connoisseur . . . the very finest in classic guitars. The FT-116 has a rosewood body and sides of matched color and texture, plus neck, bridge and headpiece of rosewood. The fan-braced top is of selected straight-grained white spruce. The fingerboard with its partial 19th fret is of ebony and features a 25 $\frac{5}{8}$ " scale. Both binding and purfling has been skillfully applied. The top edge is bound with natural color maple and inlaid with five lines of brown; the bottom edge contains one line of brown. The soundhole is surrounded by a one-inch circular pattern of browns and blacks. Expertly engraved gold plated patent head strips with elaborate pearl buttons and heavy white string posts serve to further enhance the appearance. The FT-116 is one of the finest classics available and is recommended without hesitation to those expecting exacting performance.

**FT-114 GRAND CONCERT SIZE** Has the same features as the FT-113 except that the body is of highly polished blond maple.

Binding and purfling is applied with precision; the edges are in white and black and the soundhole features a  $\frac{3}{4}$ " pattern of greens and browns. Musicians demanding clarity and beauty in sound will find the FT-114 an outstanding instrument.



**FT-113 GRAND CONCERT SIZE** The highly polished matched grain walnut construction of this Grand Concert Classic makes it one of the more beautiful of instruments. Contrasting with its sides and back of walnut is a selected close-grained white spruce top with fan bracings. The neck, with its 25 $\frac{5}{8}$ " scale and partial 19th fret, of ebony, has five white position markers on the side. The headpiece is of walnut veneer to match the body. Binding and purfling is skillfully applied with the edges done in white, black and green. The soundhole is  $\frac{3}{4}$ " of greens and browns. Geared patent head strips are of polished nickel. The FT-113 is particularly attractive to those desiring richness in looks as well as sound.

*Tarrega Classic Guitars* /

EXCLUSIVE DISTRIBUTORS

**Fender**  
SALES, INC.

Santa Ana, California